

How to Dispose of Household Waste (English Version, Overview)

Any item that exceeds 50 cm in width, height, or depth, or weighs more than 5 kg, or that can't be placed in a trash bag with its handles tied up, is considered bulky waste (excluding small electrical appliances).

Burnable Waste (P20)

Collected, twice a week, in the yellow paid trash bag

*Items with a side exceeding 50 cm or weighing more than 5 kg are bulky waste

- Food waste
- Carbon paper, receipts, thermal paper
- Household goods
- Plastics in general (including CDs, etc.)
- Styrofoam
- Rubber products
- Videotapes, cassette tapes
- Leather goods
- Pee pads for pets, sanitary products, etc.
- Diapers (for babies and adults) can be collected as burnable waste in a transparent bag as well as the paid trash bag.
- Up to five bundles of tree branches (50 cm long or less, bundled with string) can be collected without using the paid trash bag.

Non-Burnable Waste (P22)

Collected, twice a month, in the blue paid trash bag

*Items with a side exceeding 50 cm or weighing more than 5 kg are bulky waste

- Broken glass, ceramics, mirrors, etc.
→ These items do not burn
 - Knives, scissors, needles, nails, and other sharp objects
→ Please wrap any sharp edge with paper, cloth, etc. before placing it in a bag.
 - Items made of metal and other materials
For example: Umbrella
→ Made of metal, plastic, and fabric
Electric kettle
→ Made of metal and plastic
 - *Items with rechargeable batteries are considered hazardous waste regardless of material.
 - *Please try to recycle any item listed as small electrical appliances instead of disposing them as non-burnable waste.
- Waste items that can only be collected in the designated paid trash bags or with the designated paid stickers

Waste items that can only be collected in the designated paid trash bags or with the designated paid stickers

Bulky waste (P29)

Collected, by booking a collection by phone, and requires the designated sticker

*any item with a side exceeding 50 cm or weighing more than 5 kg

The waste collection operator differs depending on the area where you live. You can find the phone number for the operator in your area on page 29.

Please measure and make note of the width, height, and depth of the item to be disposed (the collection fee varies depending on the size).

Please do not purchase any stickers before booking for collection, as the fee varies depending on the item (no refunds will be made for tickets purchased by mistake).

Basic Rules

[Where to put out your garbage]

- If you live in an apartment building, the location designated by the owner
 - If you live in a house, anywhere that can be reached from the street without entering your property
- *Please try to put out your garbage in the same spot every time.

[When to put out your garbage]


Please put out your garbage before 8:00 a.m.

[How to dispose of your garbage]

- Burnable and non-burnable waste are to be disposed of in the paid trash bags designated by the city (The price depends on the volume of the bag. Items exceeding the specified volume will not be collected.)
- Bulky waste requires the designated sticker (priced from 200 to 1,500 yen)
- Recyclable and hazardous waste are to be put out in a transparent bag or basket so that the content is visible.

Recyclable Materials

Collected, twice a month, in a transparent bag, basket, etc. so that the content is visible. Please use a separate bag for each type of recyclable.

-  **Cans and items made of more than 90% metal:** Includes frying pans and pots
- Bottles:** Non-refillable bottles such as for cosmetics, paint, etc. are not collected.
- Plastic (PET) bottles:** The bottles should be rinsed and their labels and caps removed or they will not be collected.
- White trays:** Non-white or food-stained trays cannot be recycled (dispose of them as burnable waste).
- Small electrical appliances:** If it is listed on page 25, it can be collected even if it is over 50 cm in size (if it is not listed, disposed of it as non-burnable or bulky waste).
Connecting cables, power supply cables, remote controllers, other controllers, etc. can also be collected.

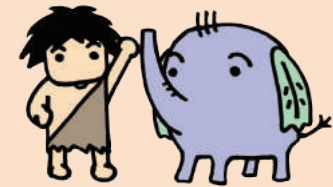
Recyclable materials and hazardous items (Put these items in a transparent bag regardless of type and size)



Hazardous Waste

Collected, twice a month, in a transparent bag so that the content is visible. Please place each type of waste in its own bag.

- Items containing rechargeable batteries:** Items that are recharged via a USB terminal, etc. and are not listed as small electrical appliances
- Examples:** Bluetooth speakers, electronic cigarettes, rechargeable toys, drones, etc.
- Fluorescent tubes:** Place them in the same box in which they were purchased or wrap them with newspaper and write "有害ごみ" directly on the box or wrap
- Items containing dry cell batteries, mercury, or lead:** Mercury thermometers, fishing weights, etc.
- Items containing flammable gas:** Gas lighters, spray cans, etc.



If you wish to dispose of any burnable, non-burnable, or bulky waste on a day other than the collection day, you can bring them directly to the waste disposal facility by car (300 yen per 10 kg paid in cash). See page 30.

*The facility does not accept credit cards. Please pay in cash.